



Heavy Duty Welded Conveyor Rollers Series 1940 Series 1960 (precision bearings)

Bearing

Balls: Precision ground chrome alloy steel
Series 1940 bearings are protected from contaminants by a series of elements as shown on left.

Series 1960 bearings utilize an additional dirtguard shield and seal. The shield, made of diecast zinc alloy, deflects large dirt particles from the bearing area. Smaller particles and liquids which work their way between the stationary dirtguard and the rotating steel shield are automatically ejected as the roller turns. The rubber "vee" ring maintains 360° contact with the steel shield, preventing loss of grease at the same time excluding dirt and water. A triple labyrinth seal and a seal provide an extra measure of protection for the bearings.

Tube

Diameters (inch) 2.50, 3.50, 4.00, **5.00**

Designed for heavy-duty conveying applications, Series 1940 and 1960 rollers feature UNIBLOC welded end construction. Heavy gauge steel ends are permanently welded in place with weld seams continuous over a full 360°. Rollers are fitted with high quality precision ground ball bearings which are factory lubricated with SHELL ALVANIA EP2 grease.

Shaft

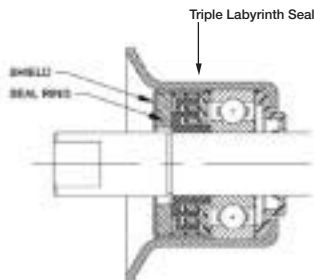
Diameter: .787

Available with milled flats, end drill and tap or threaded.

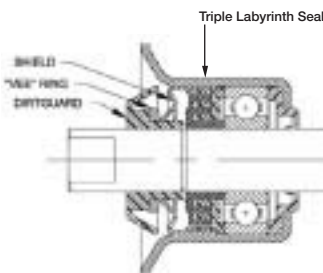
Application

Suitable for heavy duty palletizer applications as well as exposure to environmental elements such as bulk handling conveyors and foundry operations.

Non-standard



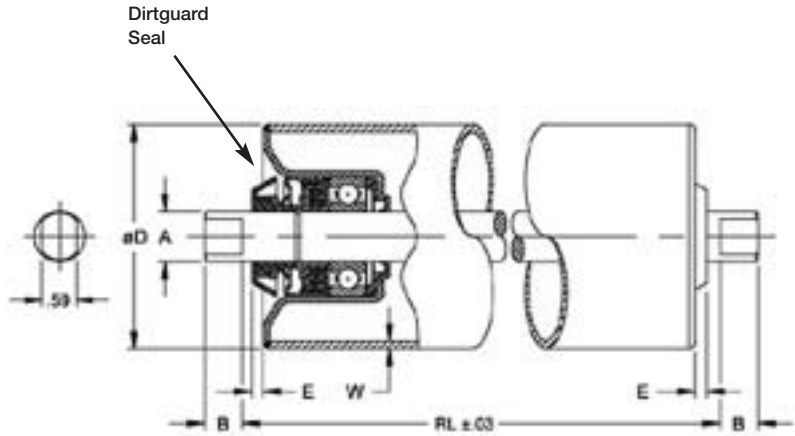
Series 1.940 seal design



Series 1.960 seal design



**Heavy Duty
 Welded Rollers
 Series 1940
 Series 1960**

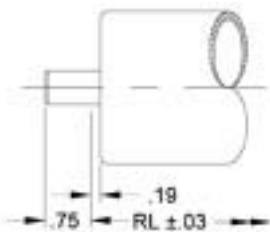


(Typical RL = BF)

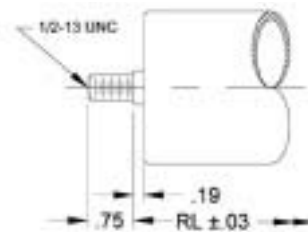
	Part Number	D	W	E	A	B	Material	Bearing/Finish	Remarks
Bearing	1.940._____-	**			.787 dia		Steel	6204ZZ	Without Dirtguard seal
	1.960._____-	**			.787 dia		Steel	6204ZZ	Dirtguard shown above
	1.941._____-	**			.787 dia		Steel	6204ZZ	Cantilever mounting
Tube	_____.H19.____-	2.50	.120				Steel	Mill	
	_____.H20.____-	3.50	.120				Steel	Mill	
	_____.H21.____-	4.00	.134				Steel	Mill	
	_____.H22.____-	5.00	.134				Steel	Mill	
Shaft	_____.C70-			.19	.787 dia	.39	Steel		See drawing above
	_____.C71-			.19	.787 dia	.90	Steel		See drawing below
	_____.C72-			.19	.787 dia	.90	Steel		See drawing below
	_____.C73-			.19	.787 dia		Steel		See drawing below

Non-standard

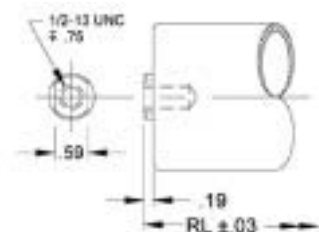
** Bearings may be used with any of the tubes listed above.



C71 Shaft (one end only)
 For cantilever mounted rollers.



C72 Shaft (one end only)
 Threaded end provides a quick mounting arrangement. **For cantilever mounted rollers.



C73 Shaft (both ends)
 Tapped ends serve as conveyor roller mounts, and as a rigid spacer for frame assembly.



MEX (55) 53 63 23 31 MTY (81) 83 54 10 18
 QRO (442) 1 95 72 60 ventas@industrialmagza.com

**Heavy Duty
 Welded Rollers
 Series 1940
 Series 1960**

	Tube Dia. In.	2.5	3.5	4	5
	Material	Steel	Steel	Steel	Steel
	Gauge	11	11	10	10
	Shaft Dia.	.787	.787	.787	.787
	RL Inches				
Series 1940/1960 precision bearing load capacity in lbs.	8	1346	1346	1346	1346
	16	1346	1346	1346	1346
	24	1006	956	947	956
	32	754	700	691	700
	40	612	556	547	556
	48	493	461	452	461
	56	302	396	387	396
	62	198	349	338	349
	70	137	311	302	311
	78	99	281	272	281

Minimum Roller Lengths for Non-Grooved Rollers (all dimensions in inches)

Diameter	Fixed
2.50	4.88
3.50	4.88
4.00	4.88
5.00	5.50

Speed Ratings Rollers for Non-Grooved Rollers (all dimensions in inches)

Bearing Type	Maximum Recommended Conveyor Speed
Precision	500 fpm

To order, use the following reference to form your ten-digit part number:

