



If It Were Any More Durable, It Would Be Stainless Steel.

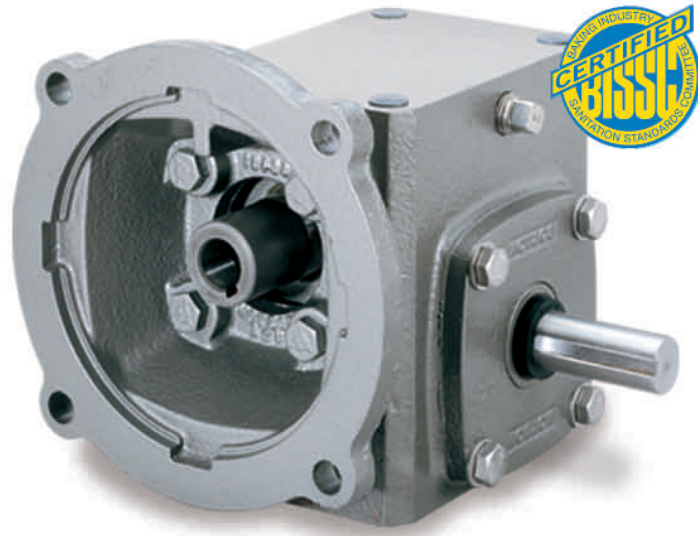
You've seen it before... a gearbox in the factory subject to aggressive washdown pressures or chemicals. Everything runs fine... until a small crack in the paint develops. Before long, it gets bigger, and soon the gearbox is a heap of rust and the USDA wants to know where the paint went!

Together with a team of chemists, Boston Gear set out to develop a coating that can withstand the high pressure washdown, withstand the harsh chemicals, and withstand the sometimes "less than kind" handling that gearboxes endure when being installed.

Our rigorous testing, in actual food production environments using high pressure, caustic washdown, impressed us. The performance will impress you.

NEW

Product Solutions for
Aggressive Food Processing Environments



"The equipment in our egg processing plant, including the gearboxes, is exposed to high pressure washdowns and the occasional assault from CIP (clean-in-place) solutions, as well as knocks from dropped equipment, tools and hose nozzles.

*The typical paint or coating systems used on supposed "washdown duty" gearboxes start showing signs of distress within the first couple of weeks, but **Boston Gear's new Stainless Bost-Kleen™ is different.** For us, speed reducers with the new SBK treatment are a great alternative to the high price of stainless steel."*

Darrell Kahler
Henningsen Foods
David City, NE

Washdown Applications

Boston
Gear

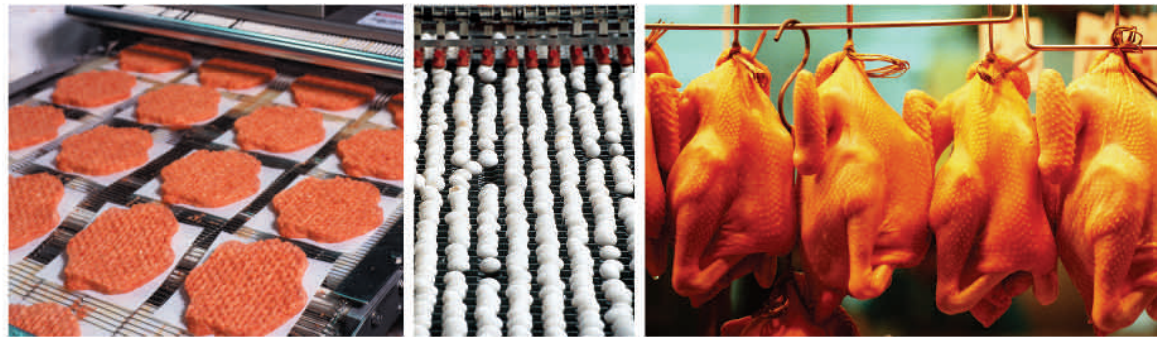
NEW and IMPROVED Stainless Bost-Kleen™ (SBK) for washdown applications



Introducing the NEW and IMPROVED Stainless Bost-Kleen™ (SBK) washdown protection from Boston Gear. We have re-engineered our popular SBK treatment to bring you added benefits, including:

- Ability to withstand the harsher chemicals and high pressure used in aggressive washdown applications
- More durable finish, to reduce the possibility of cracking during handling and installation
- Smoother finish, to reduce the possibility of crevices that *Listeria* bacterium can hide in
- State-of-the-art automated production process enables us to deliver SBK treated gearboxes quickly
- Available on ALL Boston Gear speed reducers

Independent laboratory tests have confirmed that the new SBK washdown coating system outlasts other gearbox manufacturers' washdown coating systems, including the Dodge® EZ-Kleen™ and Tigear II™.



See Boston Gear

Worm, Helical and Bevel Gear Drives Catalog (# 82545)
for detailed specifications.

To Order Call: 888-999-9860



Boston Gear
14 Hayward Street • Quincy, MA 02171
617-328-3300 • Fax: 617-479-6238
www.bostongear.com

P-1362-2-BG 8/04
Printed in USA


INDUSTRIAL MAGZA®
DIST. AUTORIZADO
MEX (55) 53 63 23 31
QRO (442) 1 95 72 60
MTY (81) 83 54 10 18
ventas@industrialmagza.com