



NEWLY DESIGNED

**MORE COMPACT with
HIGH-PERFORMANCE
MATERIAL OPTION**

RSF Flange Mount Supernuts®

Injection-molded, economical nuts ideal for standard lead screws



**DISTRIBUIDOR
AUTORIZADO**

MEX (55) 53 63 23 31 MTY (81) 83 54 10 18
QRO (442) 1 95 72 60 ventas@industrialmagza.com

THOMSON®

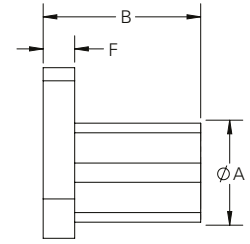
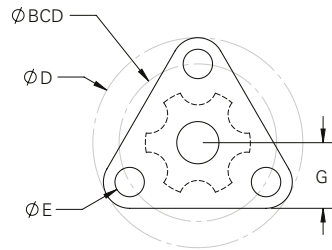
Linear Motion. Optimized.™

Flange Mount Supernuts®

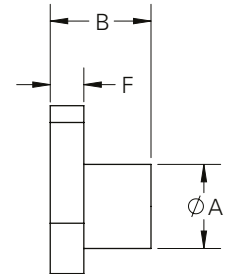
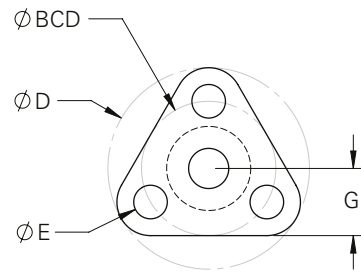
RSF / RSFH



**RSF2500 to RSF3700
RSFH2500 to RSFH3700**



**RSF1800
RSFH1800**



Integral Flange Mount

RSF models provide the excellent lubricity and dimensional stability of our proprietary Acetal with the convenience of an integral flange. The RSF nut was developed as a more compact solution over our standard MTS line and is available in a higher-performance PEEK material (RSFH models) for more demanding applications. Standard nuts for motorized lead screws are now available for all standard lead screws.

RSF - 3/16" to 1/4" (4 mm to 6 mm) Diameter

Dia.	Lead	Part No.	Supernut Dimensions							Design Load		Efficiency** [%]
			A	B	D	E	F	G	BCD	[lbs for RSF]	[lbs for RSFH]	
4 mm	1 mm	RSF_4x1M*	0.31	0.38	0.75	0.13	0.13	0.25	0.50	10	20	43
	4 mm	RSF_4-4x1M*										72
	8 mm	RSF_8-4x1M*										78
3/16"	0.050	RSF_1820*	0.31	0.38	0.75	0.13	0.13	0.25	0.50	10	20	46
	0.100	RSF_2-1820*										61
	0.200	RSF_4-1820*										73
	0.400	RSF_8-1820*										79
6 mm	1 mm	RSF_6x1M*	0.50	0.75	1.00	0.14	0.15	0.31	0.75	25	50	33
	6 mm	RSF_4-6x1.5M*										72
	12 mm	RSF_8-6x1.5M*										78
1/4"	0.031	RSF_2532*	0.50	0.75	1.00	0.14	0.15	0.31	0.75	25	50	26
	0.050	RSF2520										37
	0.063	RSF_2516*										44
	2 mm	RSF2-25x1M										48
	3 mm	RSF3-25x1M										58
	0.125	RSF_2-2516*										60
	0.250	RSF_4-2516*										73
	0.500	RSF_7-2514*										79
0.750	RSF_12-2516*	78										

* Also available in high-performance material (add H in place of _ when ordering)

** Efficiency calculation based on standard Acetal material. Efficiency for high-performance material is approximately 2% lower than standard performance material.

Note: For all sizes shown on this page, Drag Torque = Free Wheeling

RSF & RSFH Supernut Specifications

Configuration	Material	Wear Characteristics	Max Temperature	Tensile Strength	Load Range
				[psi]	[lbs]
RSF	Bearing Grade Acetal	Good	82°C (180°F)	7,200	10 - 75
RSFH	Bearing Grade PEEK	Best	121°C (250°F)	16,000	20 - 150

RSF - 5/16" to 3/8" (8 mm to 10 mm) Diameter

Dia.	Lead	Part No.	Supernut Dimensions							Design Load		Efficiency**
			A	B	D	E	F	G	BCD	[lbs for RSF]	[lbs for RSFH]	[%]
5/16"	0.083	RSF_3112*	0.63	1.00	1.25	0.14	0.19	0.41	0.875	50	100	45
	0.167	RSF_2-3112*										62
	0.250	RSF_2-3108S*										69
	0.500	RSF_4-3108S*										77
	1.000	RSF_8-3108*										78
8 mm	2 mm	RSF_8x2M*	0.63	1.00	1.25	0.14	0.19	0.41	0.875	50	100	42
	4 mm	RSF2-8x2M										58
	8 mm	RSF4-8x2M										72
	12 mm	RSF6-8x2M										76
	20 mm	RSF10-8x2M										79
3/8"	0.050	RSF3720	0.63	1.00	1.25	0.14	0.19	0.41	0.875	75	150	28
	0.063	RSF_3716*										33
	2 mm	RSF37x2M										39
	0.083	RSF3712										40
	0.100	RSF3710										45
	0.125	RSF3708S										49
	0.167	RSF_2-3712S*										55
	0.200	RSF2-3710										61
	0.250	RSF_2-3708S*										65
	0.300	RSF3-3710										69
	0.375	RSF4-3711										72
	0.500	RSF_4-3708S*										76
	1.000	RSF_5-3705*										79
1.200	RSF5-3704	78										
10 mm	2 mm	RSF_10x2M*	0.63	1.00	1.25	0.14	0.19	0.41	0.875	75	150	37
	3 mm	RSF_10x3M*										49
	4 mm	RSF2-10x2M										54
	5 mm	RSF_2-10x2.5M*										60
	6 mm	RSF4-10x1.5M										62
	10 mm	RSF_5-10x2M*										72
	12 mm	RSF5-10x2.4M										72
	20 mm	RSF_6-10x3.3M*										78
	35 mm	RSF10-10x3.5M										77

* Also available in high-performance material (add H in place of _ when ordering)

** Efficiency calculation based on standard Acetal material. Efficiency for high-performance material is approximately 2% lower than standard performance material.

Note: For all sizes shown on this page, Drag Torque = Free Wheeling

USA, CANADA and MEXICO

Thomson
203A West Rock Road
Radford, VA 24141, USA
Phone: 1-540-633-3549
Fax: 1-540-633-0294
E-mail: thomson@thomsonlinear.com
Literature: literature.thomsonlinear.com

EUROPE

United Kingdom

Thomson
Office 9, The Barns
Caddsdow Business Park
Bideford
Devon, EX39 3BT
Phone: +44 (0) 1271 334 500
E-mail: sales.uk@thomsonlinear.com

Germany

Thomson
Nürtinger Straße 70
72649 Wolfschlügen
Phone: +49 (0) 7022 504 0
Fax: +49 (0) 7022 504 405
E-mail: sales.germany@thomsonlinear.com

France

Thomson
Phone: +33 (0) 243 50 03 30
Fax: +33 (0) 243 50 03 39
E-mail: sales.france@thomsonlinear.com

Italy

Thomson
Largo Brughetti
20030 Bovisio Masciago
Phone: +39 0362 594260
Fax: +39 0362 594263
E-mail: sales.italy@thomsonlinear.com

Spain

Thomson
E-mail: sales.esm@thomsonlinear.com

Sweden

Thomson
Estridsväg 10
29109 Kristianstad
Phone: +46 (0) 44 24 67 00
Fax: +46 (0) 44 24 40 85
E-mail: sales.scandinavia@thomsonlinear.com

ASIA

Asia Pacific

Thomson
E-mail: sales.apac@thomsonlinear.com

China

Thomson
Rm 2205, Scitech Tower
22 Jianguomen Wai Street
Beijing 100004
Phone: +86 400 6661 802
Fax: +86 10 6515 0263
E-mail: sales.china@thomsonlinear.com

India

Thomson
c/o Fluke Technologies Pvt. Ltd.
#424, Deodhar Center,
Marol Maroshi Road,
Andheri – E, Mumbai – 400059 India
Phone: +91 22 29207641
E-mail: sales.india@thomsonlinear.com

Japan

Thomson
Minami-Kaneden 2-12-23, Suita
Osaka 564-0044 Japan
Phone: +81-6-6386-8001
Fax: +81-6-6386-5022
E-mail: csjapan@scgap.com

Korea

Thomson
F7 Ilsong Bldg, 157-37
Samsung-dong, Kangnam-gu,
Seoul, Korea (135-090)
Phone: +82 2 6917 5049
Fax: +82 2 528 1456
E-mail: sales.korea@thomsonlinear.com

SOUTH AMERICA

Brazil

Thomson
Av. Tamboré, 1077
Barueri, SP – 06460-000
Phone: +55 (11) 3616-0191
Fax: +55 (11) 3611-1982
E-mail: sales.brasil@thomsonlinear.com



DISTRIBUIDOR
AUTORIZADO

MEX (55) 53 63 23 31 MTY (81) 83 54 10 18
QRO (442) 1 95 72 60 ventas@industrialmagza.com

www.thomsonlinear.com

Flange_Mount_Supernuts_BREN-00XX-01A | 20160725KB
Errors and technical alterations reserved. It is the responsibility of the product user to determine the suitability of this product for a specific application. All trademarks property of their respective owners. ©2016 Thomson Industries, Inc.

THOMSON

Linear Motion. Optimized.™